

GAGetrak[®]

The World's Leading Calibration Management Software

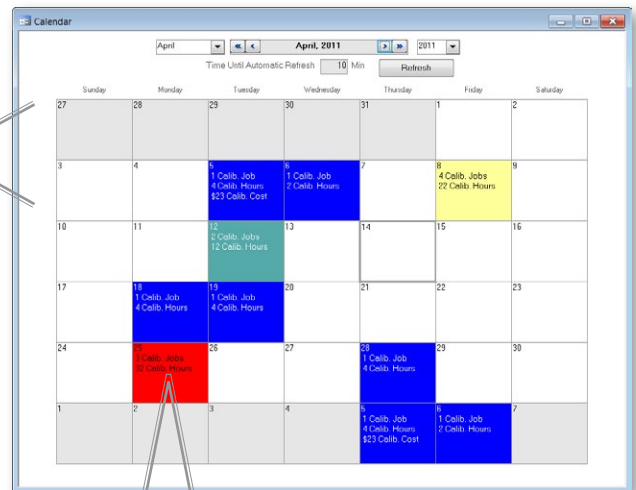


With a solid track record spanning over 25 years and over 12,000 customers worldwide, GAGetrak is the #1 calibration management software solution in the world.

GAGetrak allows you to better manage your workload, minimize overtime costs, maintain production schedules, assure standards compliance and increase profitability.

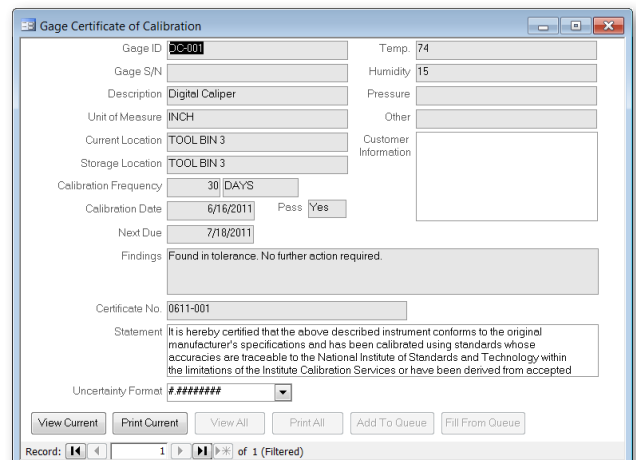
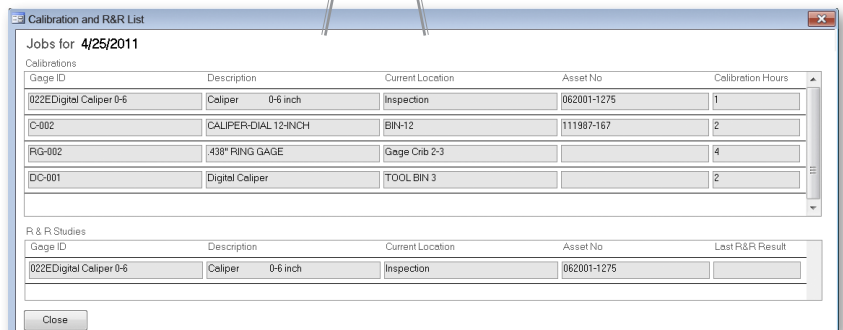
It's Not Just Software, It's a Solution

As your business grows and changes, so will your calibration management needs. That's why GAGetrak is designed to grow with your organization, from a single user on one computer to several users on a local area network or in the Cloud. GAGetrak Cloud and GAGetrak SQL Server can accommodate the largest of databases and the addition of many more users.



Use GAGetrak to:

- Manage gages
- Maintain production schedules
- Track gage locations and usage history
- Monitor scheduled and unscheduled calibrations
- Generate work orders
- Employ gage R&R (MSA 4th Edition) - The integrated gage R&R module supports short form, long form, linearity, stability, ANOVA and attribute studies
- Assure standards compliance including 21 CFR Part 11
- Produce calibration certificates
- Produce bar-coded calibration labels
- Create thorough, customized reports to analyze and stay ahead of trends, forecast workloads, improve efficiency and minimize costs



Calibration Entry

Calibration Measurements Procedures Signature and Scans Additional

Gage ID: 022E-DCAL Description: Digital Caliper 0-12 inch

Gage S/N: 9087-3456-90807 Est Costs: \$25.00

Calib Freq: 6 Months Next Due: 5/14/2007 Costs: \$0.00

Calibration Date: 11/14/2006 Time: 7:51:39 AM Hours: 0 0.5 Start

Department: QC Certificate No: 0411-002

By: Administrator Uncertainty: 0.05112

Calibration Type: Scheduled Calibration Coverage Factor: 2

Results: Normal Deg of Freedom: 38

Action Required: None Temperature: 71°

As Found Condition: In Humidity: 23%

Calibration Status: Passed Pressure: N/A

Interval Adjustment Method: None Other:

Findings: Pass Select Label Design:

Minor Adjustment

MSA Graph Certificate Gage Entry View Label Print Label Edit Label Tape Catalog

Record: 5 of 6

Print durable, laminated labels directly from GAGetrak with the GAGetrak Calibration Label Kit.

CALIBRATED

CAL DATE: 09/15/2011 GAGE ID: 245669

LOC: SF12 CAL CERT: 8210926

CAL DUE: 09/15/2012

Gage ID: 022E Caliper 0-6 inch
Desc.: Caliper 0-6 inch
Gage SN: A97004910

Gage ID: F23659

Higher Standards

By enforcing systematic, adaptable and auditable record keeping, GAGetrak promotes and maintains compliance with worldwide quality standards: ISO 9000, ISO/TS 16949, ISO 13485, ISO/IEC 17025, ISO 22000, AS 9100 and FDA 21 CFR Part 11.

The 21 CFR Part 11-compliant version of GAGetrak automatically enforces security and the Electronic Signature, Advanced Audit Log and Login Timeout functions. Completion and approval signatures can be required for calibrations; once a record is signed, it cannot be modified unless the original signer unsigns the record. The Advanced Audit Log indefinitely preserves a comprehensive, searchable history of all user actions.

Calibration Entry

Calibration Measurements Procedures Signature and Scans Additional

Gage ID: USGage Description:

Calibrated By Signature

Signature Name	Signature Date	Signature Time	Signature Mode
Administrator	4/14/2011	10:17:08 AM	Signed
*			

Approved By Signature

Signature Name	Signature Date	Signature Time	Signature Mode
Administrator	4/14/2011	10:17:09 AM	Signed

Calibration Scans

Scan Date	File Path	Description
-----------	-----------	-------------

Unsign Unsign

Audit Log

Audit ID	Date / Time	User	Object	Action	Date Key
565	4/12/2011 2:19:06 PM	No User ID	Calibration Entry	Delete	Test1[4/12/2011]CP22E R
564	4/12/2011 2:19:03 PM	No User ID	Calibration Entry	Delete	Test2[4/12/2011]CP22E R
563	4/12/2011 2:08:23 PM	No User ID	Calibration Entry	Update	Test1 4/12/2011 2:06:33 P

Field Name	Old Value	New Value	Memo Value (for Memo field)
AcctNo		[Deleted]	
Action_Required		[Deleted]	
Approved	-1	[Deleted]	
Calibration_By	No User Name	[Deleted]	
Calibration_Cost	0	[Deleted]	

Record: 55 of 148

Logon - GAGetrak Electronic Signature Authentication

User ID:

Password:

OK Cancel

GAGetrak can be tailored to fit your company's needs by way of scalability, customizability and the addition of any or all of these optional products:

Portable Calibration Solution (PCS)

GAGetrak is portable! PCS includes the Portable Calibration Module software, a portable label printer and a Dell Netbook computer. View calibration procedures and gage and calibration data, generate calibration-related reports, calibration certificates and failure notifications and even print durable labels in the field. If you outsource calibrations, your provider uses the module to update your calibration data, and when the gages come back, you can easily sync the data with your GAGetrak database.



Validation Kit

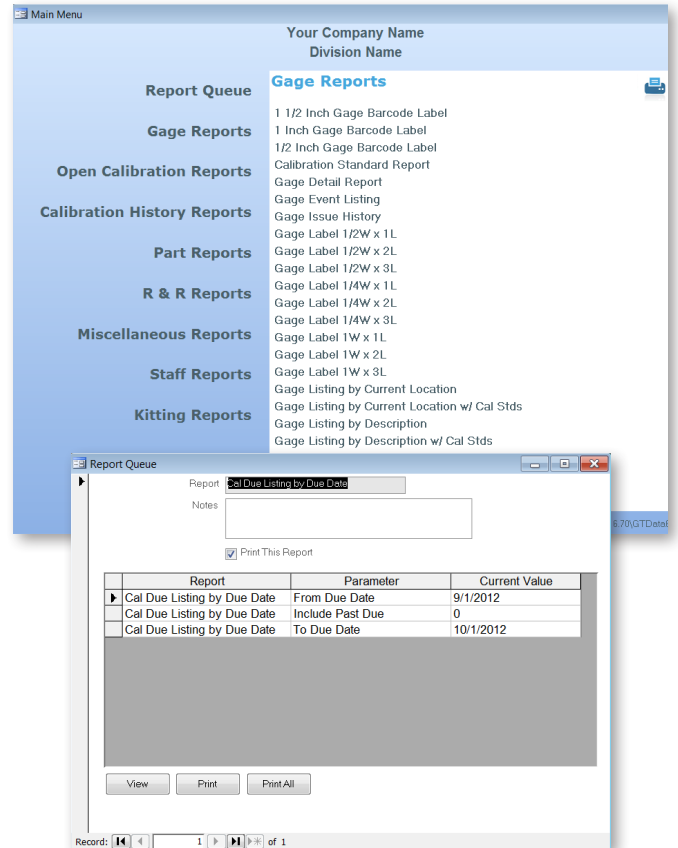
The GAGetrak Validation Kit helps you establish and document FDA validation of your GAGetrak software. It includes a validation guide which serves as the basis by which the software is validated and a validation database to assist you with:

- Testing the software's functionality
- Preparing your SOPs for GAGetrak
- Training the users of the software
- Documenting the formal validation report



GAGetrak Report Viewer

GAGetrak Report Viewer is an easy-to-use desktop utility that allows employees to view, print and email any standard reports as well as custom reports that have been created within GAGetrak. Report Viewer utilizes the same security system that is built into GAGetrak, so only authorized staff and managers can access it.



Calibration Label Kit

Create durable, laminated, bar-coded calibration labels directly out of GAGetrak with this compact Brother® printer (PT-9700PC desktop or PT-9800PCN network).



The harsh-environment labels are resistant to moisture, temperature extremes, industrial chemicals, UV and abrasion and are available in a variety of sizes and colors.

Total Calibration Solution (TCS)

TCS combines everything you need for ISO 9000 and ISO/TS 16949 calibration compliance at a special package price.

- GAGetrak Software
- Calibration Label Kit
- CalPro Calibration Procedures
- Annual Maintenance and Support Agreement (MA) which includes professional, technical support for one year and free in-version updates



Double your efficiency with TCS+!

TCS+ includes the contents of TCS plus an additional GAGetrak license with Maintenance and Support.

BEACON

GAGetrak BEACON is an easy-to-use, flexible system that saves time and improves efficiency by ensuring that your technicians receive accurate calibration due email notices on time. After loading and configuring, no manual intervention is required. BEACON periodically polls your GAGetrak database for calibrations that are due and efficiently sends out email notices to the calibration technicians. BEACON can be configured to send notices to specific technicians or departments that are responsible for certain gages.

GAGetrak SQL Server

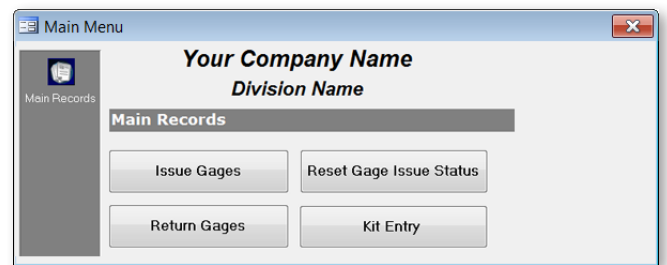
The SQL Server version of GAGetrak provides stability and efficiency for large, multi-user databases and greater data security. It works just like GAGetrak single-user and network versions, but uses Microsoft SQL Server as a database engine.

CalPro

An indispensable asset for any calibration department, CalPro is a database of step-by-step calibration procedures for more than sixty commonly used inspection gages, instruments and reference standards. Import CalPro procedures into GAGetrak or print them from the included DOC files.

Issue & Return Module

With GAGetrak's Issue & Return Module, you'll never lose track of your gages again. This simple, easy-to-use interface gives you quick access to GAGetrak's Issue Gages, Return Gages and Kit Entry screens as well as the Reset Gage Issue Status utility. This module is a perfect solution for a gage or tool crib operator who does not need a full copy of GAGetrak. Using Issue & Return allows you to track each instance of a gage being loaned out or sent out for calibration or repair and its return to the crib. By tracking this information, you will be able to locate any gage at any time and you can identify which gages are used most often and by whom.



GAGetrak's Issue & Return Module is an easy, efficient way to track gage locations and most importantly, it enables you to provide a traceable gage usage history for every gage. Combine the module with the Calibration Label Kit and Bar Code Reader to improve efficiency even more.

CyberSensor

CyberSensor connects to your computer via a USB port and monitors the temperature and relative humidity of your calibration environment, making your calibration documentation even more complete.

Just pass a calibration or double-click the Temperature or Humidity fields in GAGetrak's calibration window to populate the fields with data from the CyberSensor.



These products are part of the reason GAGetrak is the #1 calibration management software solution in the world. Contact us today to learn how these products will maximize your productivity with GAGetrak.

GAGetrak Success Stories

HALLIBURTON

Founded in 1919 and with more than 60,000 employees worldwide, Halliburton serves the upstream oil and gas industry throughout the life cycle of the reservoir.

Halliburton's Kathy Paredes needed to save time, reduce costly errors and inconsistencies associated with storing and tracking data via spreadsheets and implement company-wide standardization of gage and calibration data.

Halliburton initially installed one license of GAGetrak at a single location in early 2005 because it is "easier to use and has a place for all the required information to maintain our gages," Paredes says. Halliburton found GAGetrak to be such a valuable asset that since 2005, they've installed GAGetrak at an additional 61 locations worldwide. Halliburton continues to use GAGetrak "because it is the best fit for all locations whether they calibrate their own gages or have them outsourced."



Metso Paper is a global supplier of sustainable technology and services for mining, construction, energy, metal recycling and the pulp and paper industries. Metso's Aiken Service Center, located in Aiken, SC focuses on the company's pulp and paper industry utilizing GAGetrak Calibration Management Software to track its 335 instruments and gages for over 275 calibrations each year.

The move to GAGetrak was a big one, as the company had previously used spreadsheet programs and paper notices to track calibrations. Jeff Vuick, Metso's primary GAGetrak user, says that GAGetrak was all new to him as he undertook the task of transferring his data from the old system. One of Vuick's favorite features in GAGetrak is the Cloning function which helped immensely during the initial setup.

GAGetrak provides information on when the calibration is due, on which gage or instrument, whether the gage is in-house or outsourced and, as Vuick notes, "...this system is known to the ISO auditors... this is a big plus for our company."



Alcoa is the world's leading producer of primary aluminum and fabricated aluminum, as well as the world's largest miner of bauxite and refiner of alumina.

Prior to GAGetrak, the company used paper files to track calibrations. Alcoa's Lafayette, IN location is responsible for managing thousands of gages and test equipment and conducting thousands of calibrations each year to ensure accurate and reliable measurements. Alcoa chose GAGetrak Calibration Management Software to track their metrology assets, schedule their calibrations and maintain a system that is compliant with their corporate quality requirements and standards.

Alcoa's global technology organization is dedicated to discovering and developing the next generation of Alcoa products, processes and services. Alcoa chooses GAGetrak to help assure quality and ensure measurement accuracy.



The Bosch Group is a leading global supplier of technology and services in automotive and industrial technology, consumer goods and building technology. The Automotive Technology division is Bosch's largest business sector in North America employing approximately 12,200 associates at approximately 30 primary locations.

Bosch chose GAGetrak Calibration Management Software to track their metrology assets, schedule calibrations and maintain a system that is compliant with their quality standards. "GAGetrak streamlined our recall process," says Ben Thomas, the primary GAGetrak user. Prior to GAGetrak, the company used filing cabinets and index cards to track calibrations. With GAGetrak, the calibration tracking process at Robert Bosch became almost paperless.

While there are 29 Bosch US and international facilities that have GAGetrak installed, the Anderson, SC location alone is responsible for managing 4,500 gages and conducting 4,000 calibrations each year to ensure accurate and reliable measurements of their gasoline systems products.

Why Choose GAGetrak?

- Ease of use
- Affordability
- Comprehensive monitoring
- Automatic or manual setting of calibration due dates
- Issue/Return
- Standards traceability
- Gage R&R (MSA 4th Edition):
GRR ANOVA, GRR Nested ANOVA,
GRR Long AIAG, GRR Short AIAG,
Linearity, Bias and Uncertainty, Stability,
Attribute Risk Analysis, Attribute Analytic Method
- Standards compliance assurance: ISO 9000,
ISO 13485, ISO/TS 16949, AS 9100,
ISO/IEC 17025, ISO 22000 and 21 CFR Part 11
- Security: form-level security, individual field-level
security, group-level security and passwords,
user ID and password management
- Filter by any field to run reports
- Track critical instruments
- Clone gage, kit and procedure records
- Attach documents to gage, calibration and
procedure records
- Enforce calibration procedures
- Mobilize your calibration department
- Automatic email event notification
- Quick and advanced filtering
- Gage kitting
- Advanced calibration history
- Advanced uncertainty calculations
- Advanced service requests
- Customizable field names, menus, labels and reports
- Microsoft SQL Server Compatibility
- Cloud solution

Professional Services

Whether GAGetrak is your first calibration management software solution or you're upgrading to GAGetrak from another application, our comprehensive suite of professional services will minimize your downtime and make the transition seamless.



- Consultation
- Data Import
- On-site Implementation
- On-site Validation
- On-site Training
- Regional Training
- Web Training

Our team of in-house Client Solutions Managers will advise you on the ideal setup and use of our products for your company's unique infrastructure and get GAGetrak up and running quickly so you can focus on what you do best.

Take a video tour through GAGetrak to see how easy it is to manage your workload, minimize overtime costs, maintain production schedules and assure standards compliance.



[CLICK HERE](#)

Invest in Stability

When you invest time and money in a software solution, it's important to choose a provider with a solid, long-standing reputation. CyberMetrics has been in business since 1988, so rest assured that our team of professionals will be available to you, providing on-going support, education and consultation services, making sure you get the most out of your investment.

Free Software Trial

Contact us today for your free 30-day trial or personalized web demonstration of GAGetrak and you'll see why GAGetrak is the #1 calibration management software solution in the world.

GAGetrak®

Keshrup Systems Pvt Ltd

91-250-2391365 / 2391366 www.keshrup.com

Keshrup Systems Pvt Ltd

www.keshrup.com • 91-250-2391365 / 2391366 • Works: Shop No. 1, Neminath Industrial Estate - 3, Navghar, Vasai(E) - 401 210